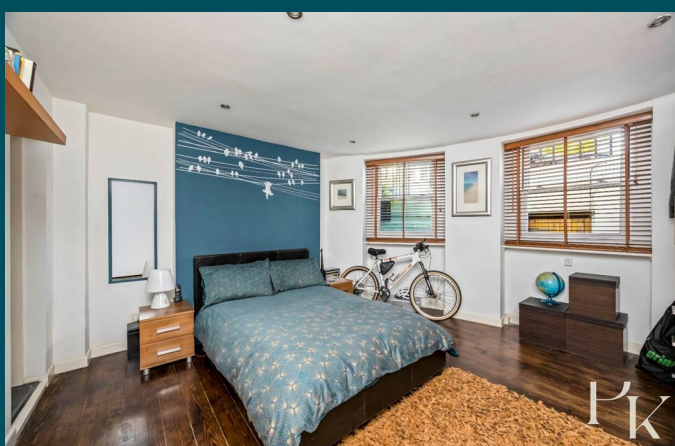
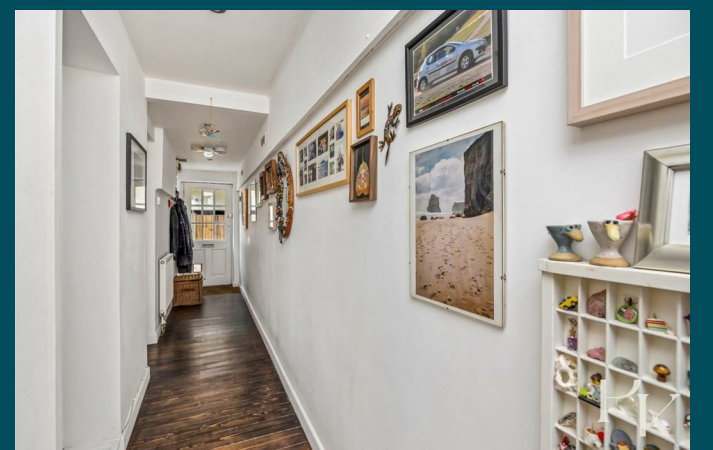




6 Lansdowne Place
Hove, BN3 1HG



6 Lansdowne Place

Hove, BN3 1HG

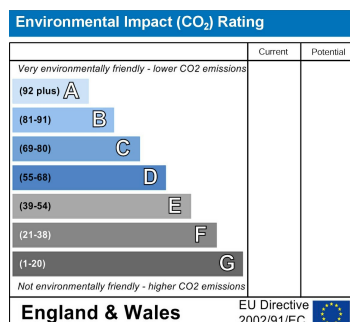
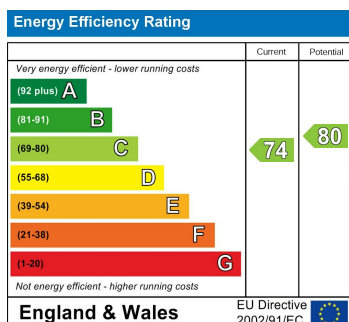
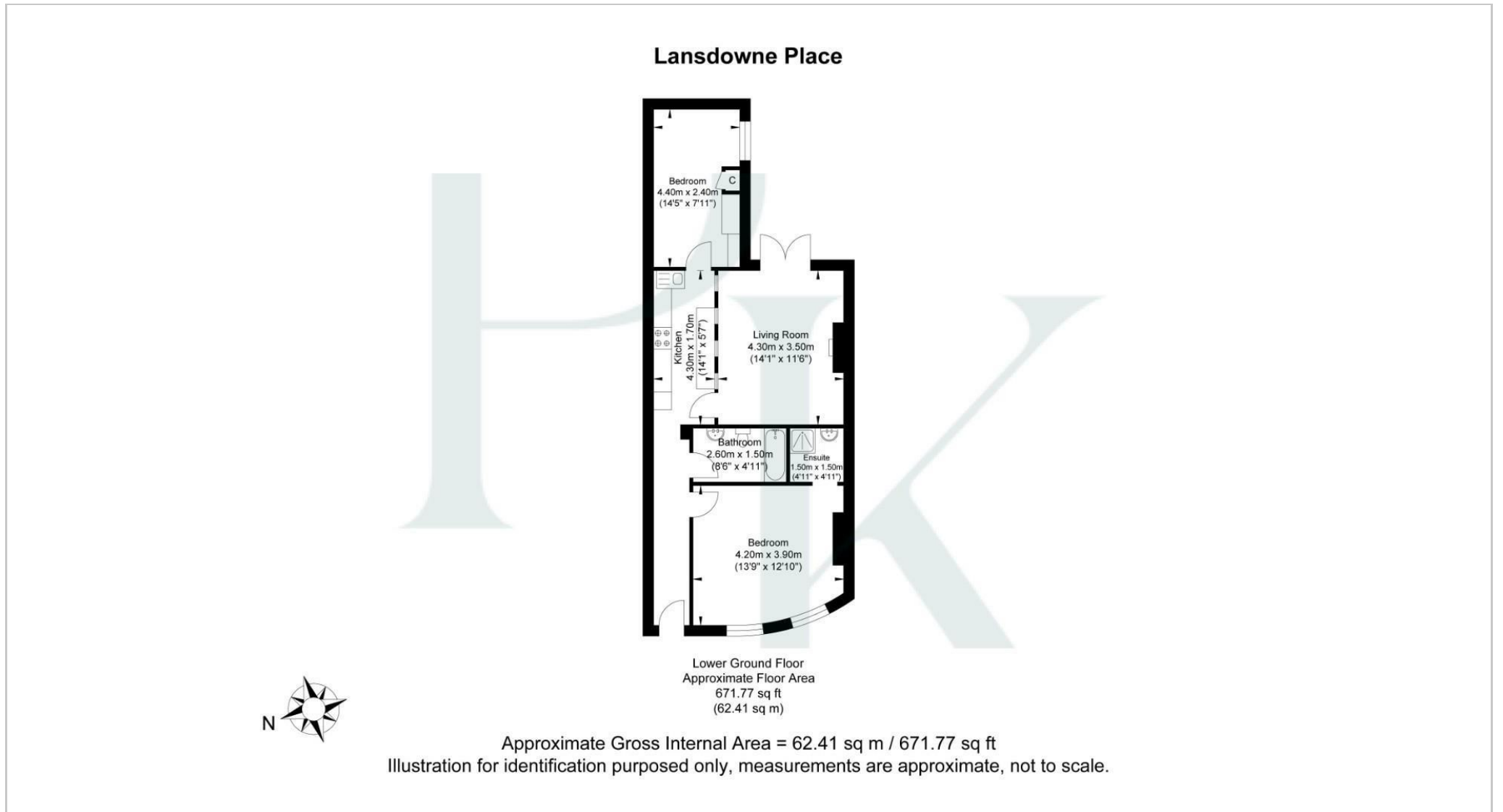
Asking price £395,000

Occupying the lower ground floor of an attractive period building on one of Hove's most prestigious seafront roads, this beautifully presented two-bedroom apartment combines generous proportions, character and modern styling, all within moments of the beach and the vibrant amenities of central Hove.

Extending to approximately 672 sq ft (62.41 sq m), the property offers well-balanced accommodation throughout. At its heart is a spacious living room, flooded with natural light from French doors that open directly onto a private courtyard patio. This secluded outdoor space provides a peaceful retreat and an ideal setting for al fresco dining, entertaining or simply unwinding after a day by the sea.

The contemporary kitchen is thoughtfully designed with ample storage and workspace, while a central hallway creates a natural flow between the principal rooms. Both bedrooms are comfortable doubles, with the impressive principal bedroom benefiting from its own en-suite shower room. A stylish family bathroom, finished with elegant tiling and a full-sized bath, serves the remainder of the apartment.

Lansdowne Place is perfectly positioned to enjoy everything that makes Hove such a desirable place to live. The seafront and promenade are at the end of the road, while the independent cafés, restaurants and boutiques of Church Road are just a short stroll away. Hove Station is also within easy reach, providing convenient links to London and beyond.



Pearson
Keehan